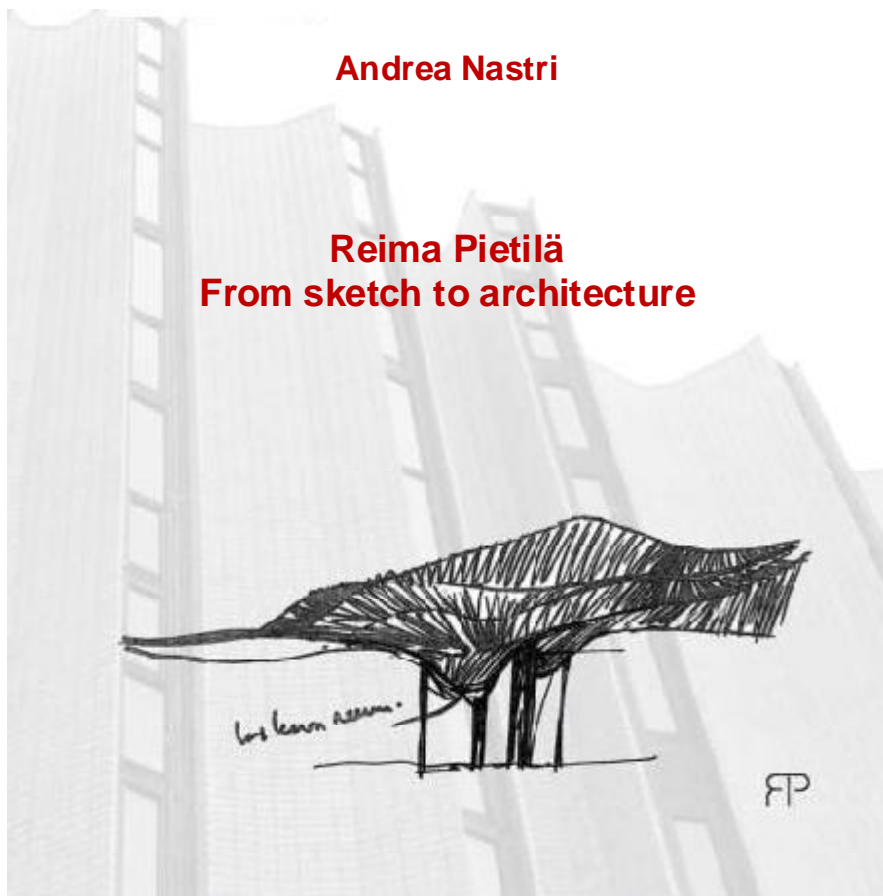


Andrea Natri

**Reima Pietilä
From sketch to architecture**



Accademia Nazionale di San Luca, Roma, 28th May 2014

Reima Pietilä. From sketch to architecture

“According to a very ancient idea, architecture is like crystallized music but, as soon as the form follows its function, the music just vanishes”

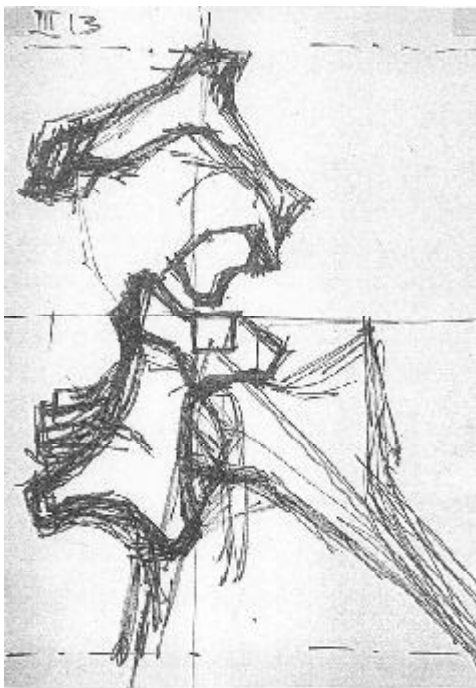
“First thing to do is to free your mind, so that, it is possible to see the limits of the Functionalism attitude (...) with a clear view in mind, we can bring some adjustments and repositions to our theory and drawing technique, these are peculiar features of an era, that will lead us to a more global approach”

“My starting point, when I’m looking for an essence in architecture, is organic”

“I suspect that we have reached a simple and standardized methodology in drawing without considering its meaning. It means we are brainwashing the current architects’ generation forcing them to think in a limited way”

Reima Pietilä

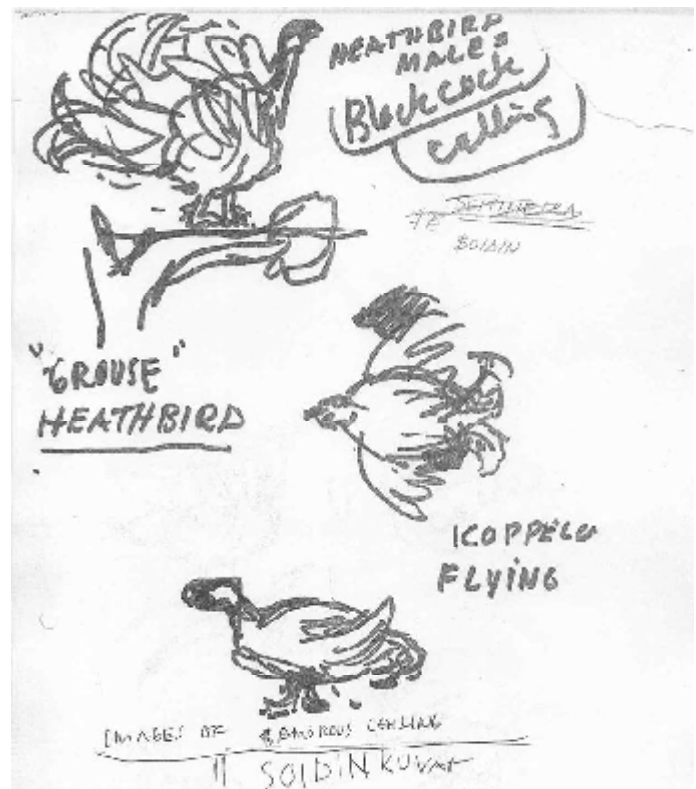
Reima Pietilä. From sketch to architecture



“A concise sketch is very often the solution to a problem. The sketch may appear as mystical, it is like a drawing for an artist, but it brings in itself the pure idea of the architecture concept”

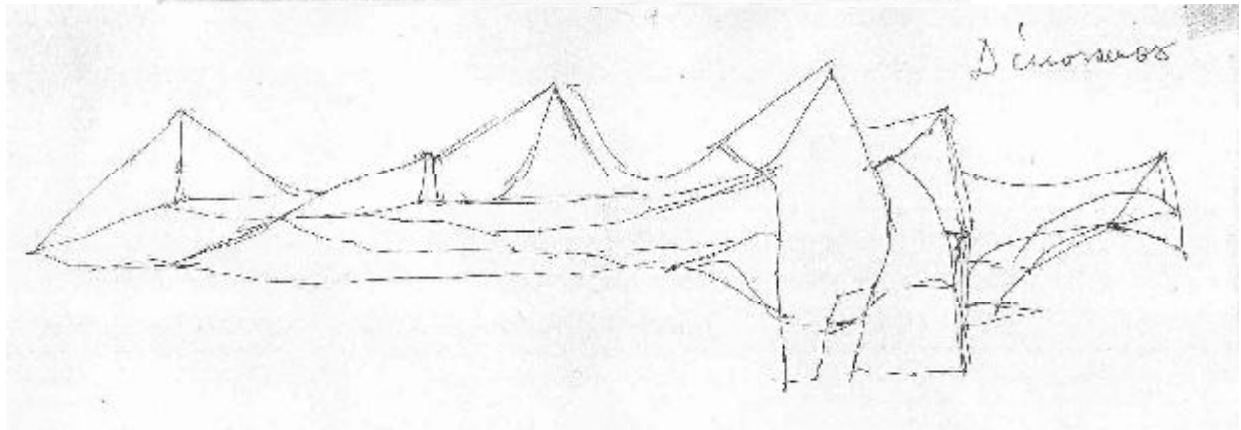
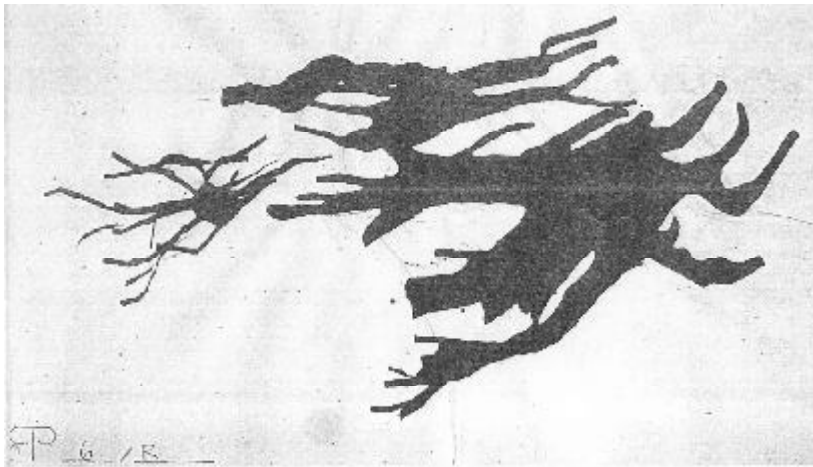
Reima Pietilä

Sketching is the core of Pietilä design method



Reima Pietilä. From sketch to architecture

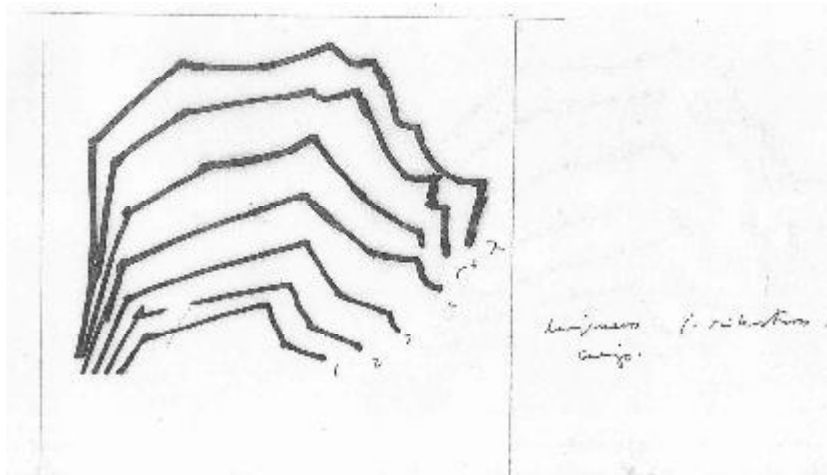
A preliminary sketch is like a fragment of an idea still to be decoded, emphasized and developed



Reima Pietilä. From sketch to architecture

The gestation of a project that was developing like a foetus in the maternal womb

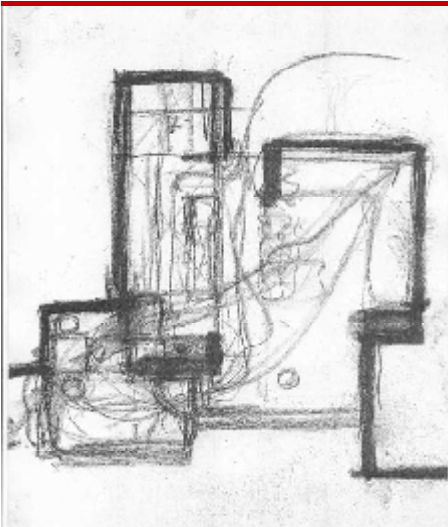
His journey towards the final project begun with plenty of rapid sketches, a sort of a prenatal architecture phase, in which most of the project, was already present as “soft information”, as clearly stated by Pietilä himself



“The figurative metamorphosis from the first sketch to the final project is a long series of sketches with different nature”

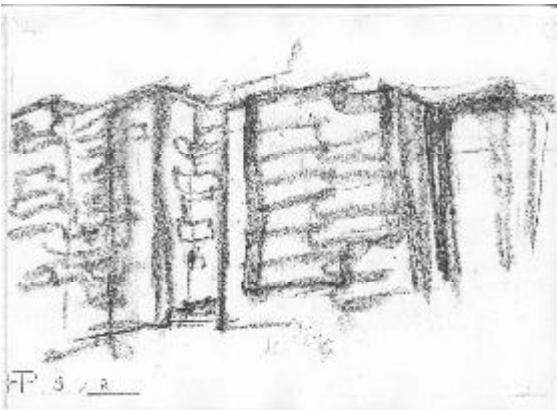
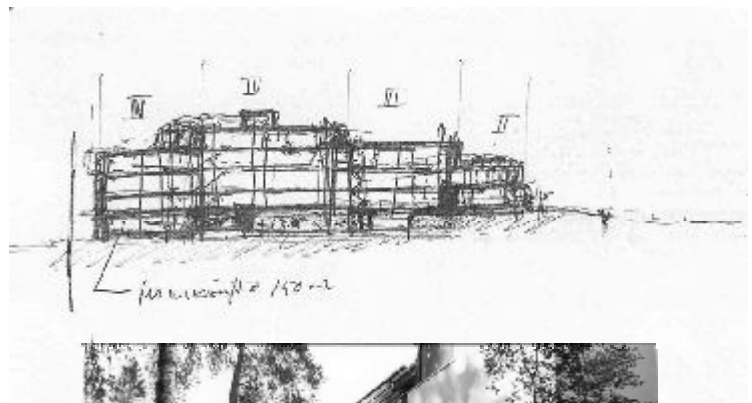
Reima Pietilä

Reima Pietilä. From sketch to architecture



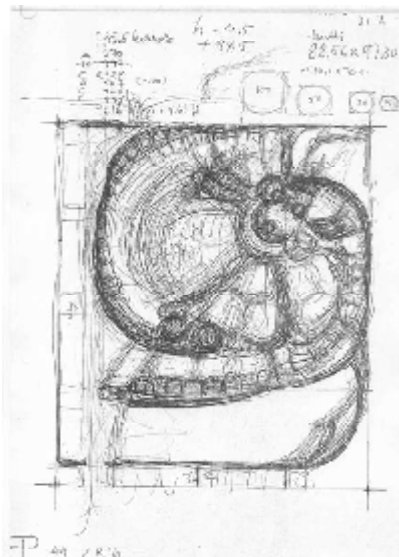
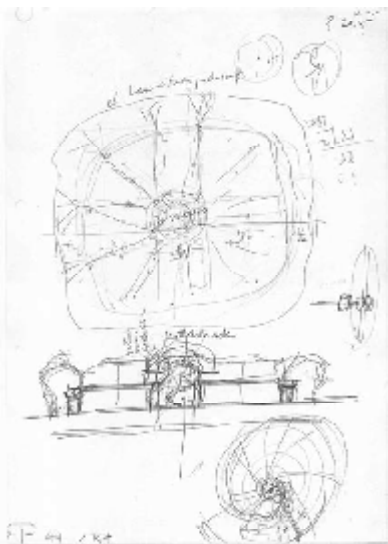
“Some sketches had their own life, they were growing up following a natural process. Sometimes sketch gets to live on its own and then keeps on living, it is easy, it is a very natural process”

Raili Pietilä



Reima Pietilä. From sketch to architecture

Processing a project was as a sort of a constant evolution and therefore it was doomed to be “unfinished”

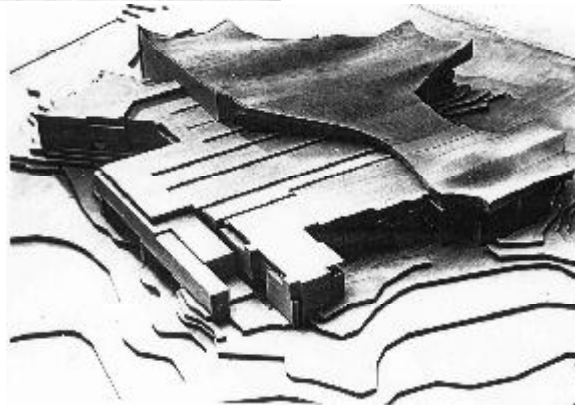
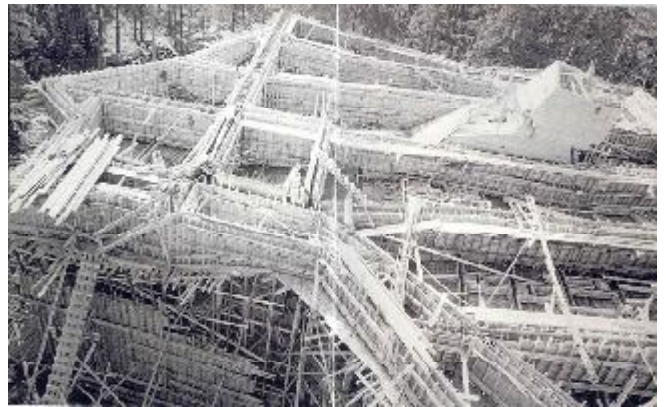
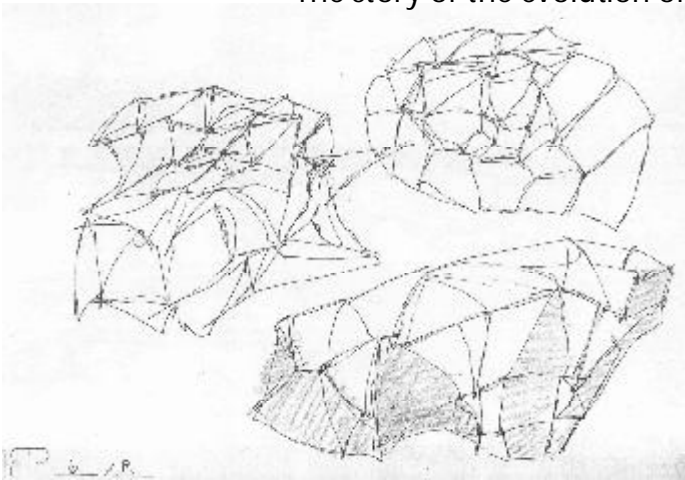


“In my opinion works are indefinite and do not have an end. There is an irrational difficulty consciously deposited in my work”

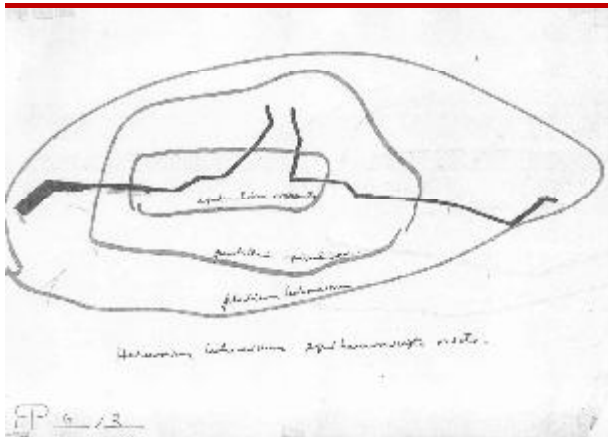
Reima Pietilä

Reima Pietilä. From sketch to architecture

The story of the evolution of the core idea of the project



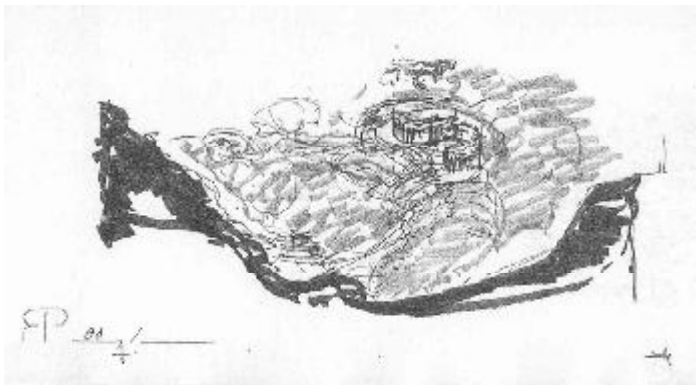
Reima Pietilä. From sketch to architecture



“Dipoli might represent a typical example of what Pietilä defines to be a natural building”
Carmine Benincasa



Reima Pietilä. From sketch to architecture

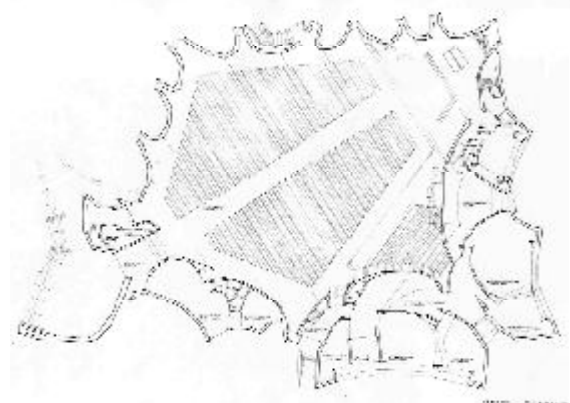
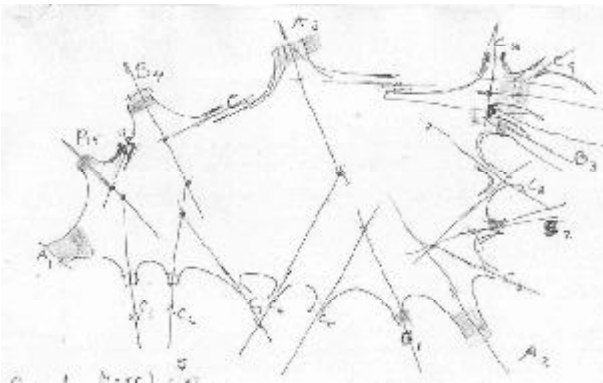
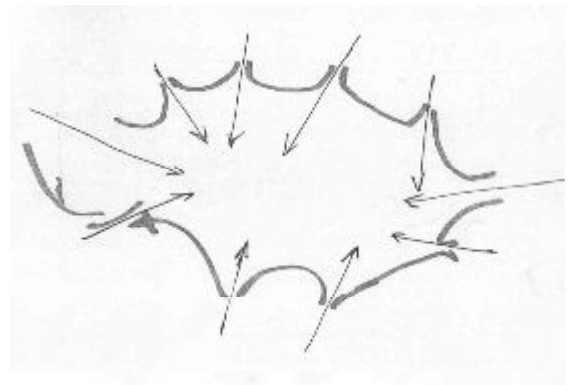
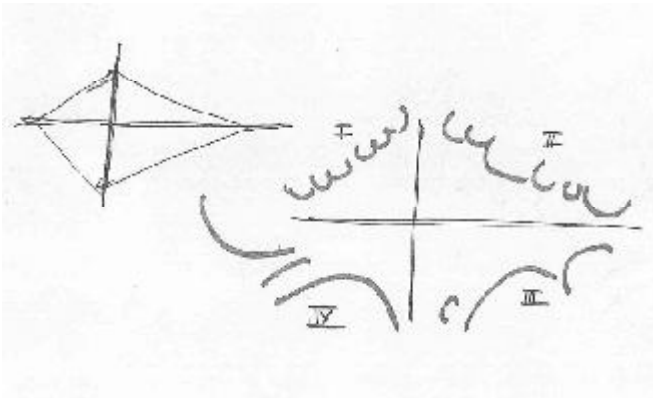


“Pietilä’s project is the only one that truly and genuinely explores the rocky soil, proposing a solution filled with the scent of the Nature and of the Finnish climate, as performing a Finnish poem”

Malcolm Quantrill

Reima Pietilä. From sketch to architecture

The process that leads from sketch to architecture





ANDREA NASTRI

REIMA PIETILÄ

DALLO SCHIZZO ALL'ARCHITETTURA



Andrea Nistri

Reima Pietilä

From sketch to architecture

Accademia Nazionale di San Luca
Roma, 28th May 2014

Thank you!